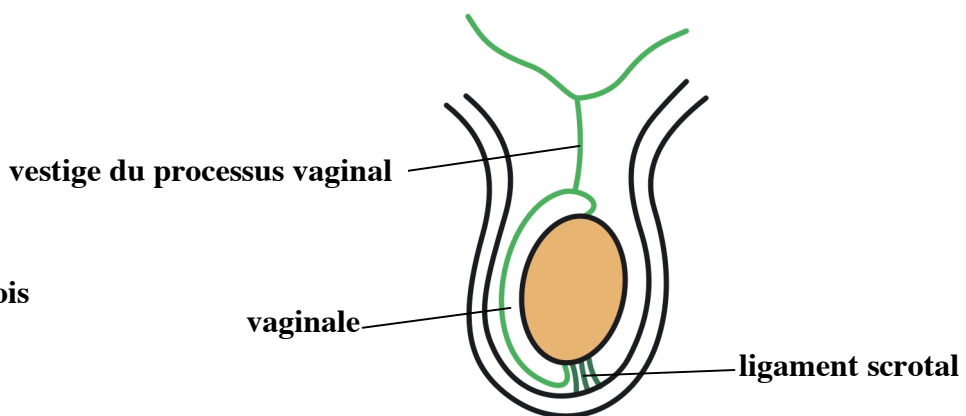
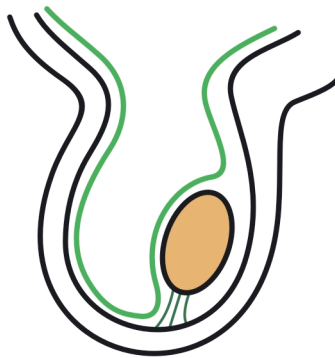
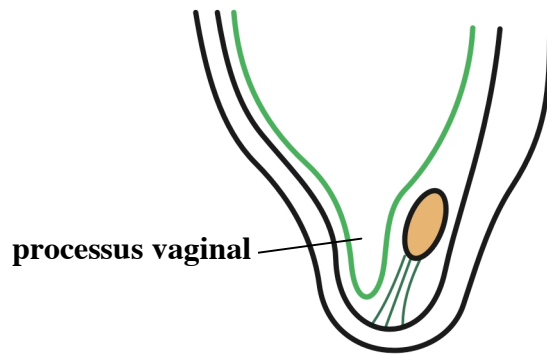
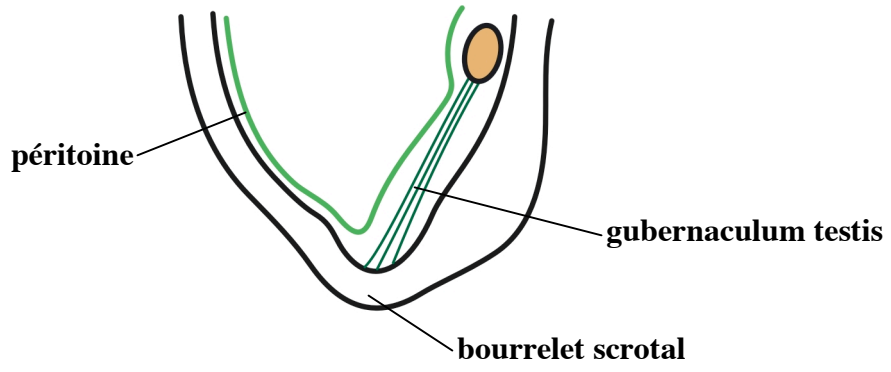


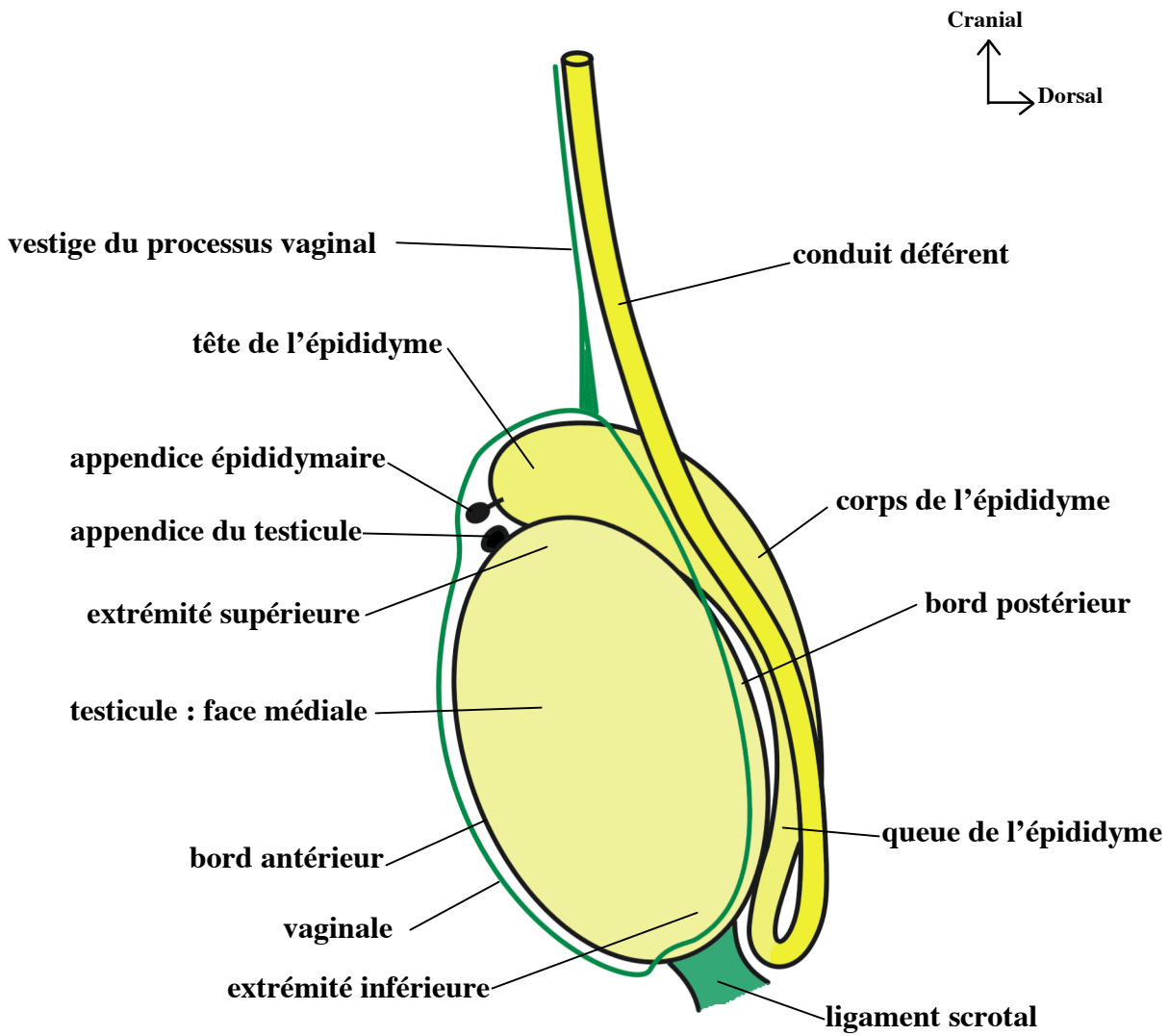
# **L'APPAREIL GENITAL MASCULIN**

3<sup>ème</sup> mois

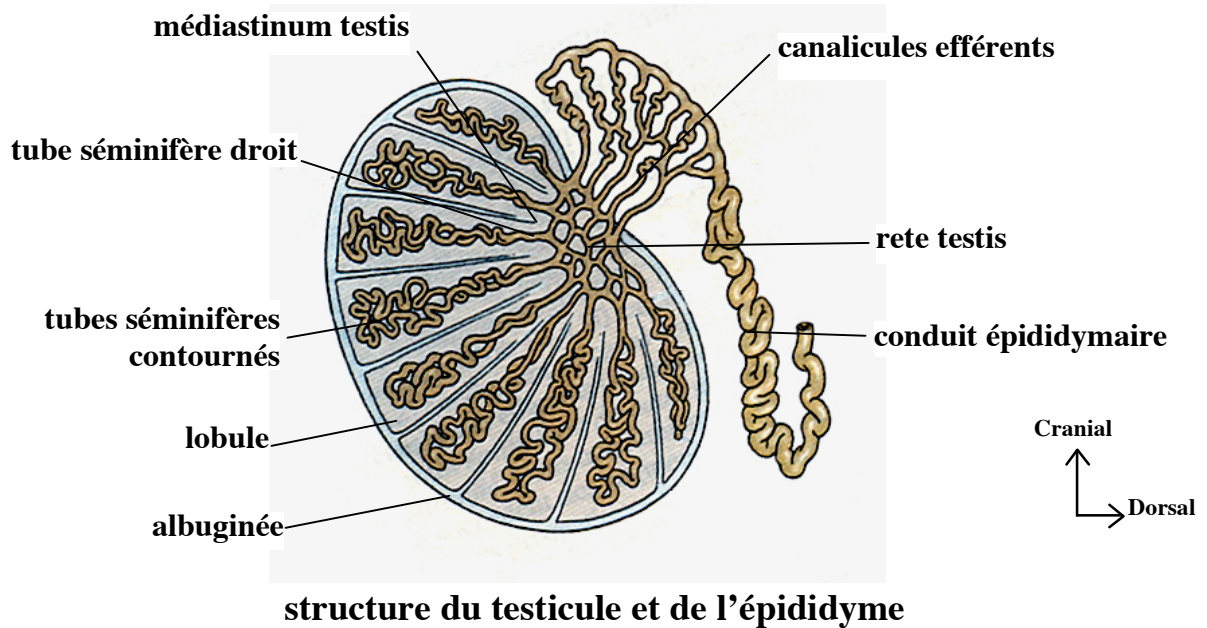


8<sup>ème</sup> mois

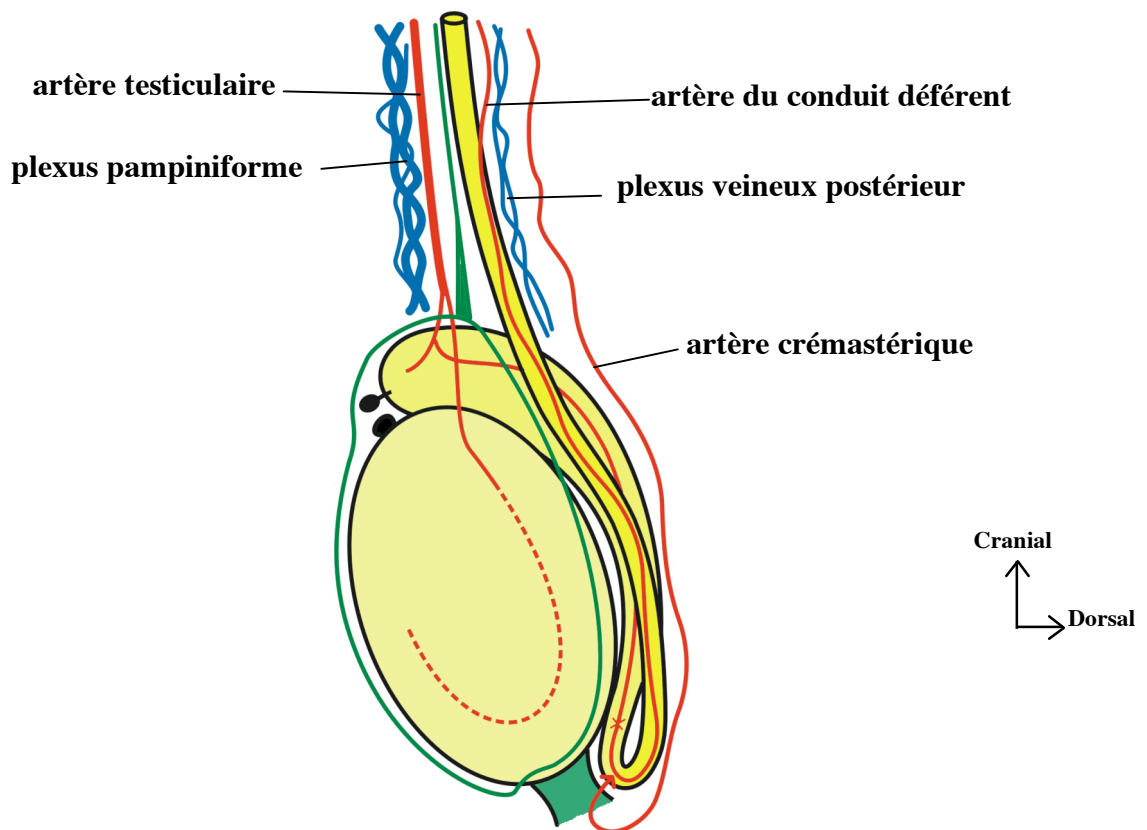
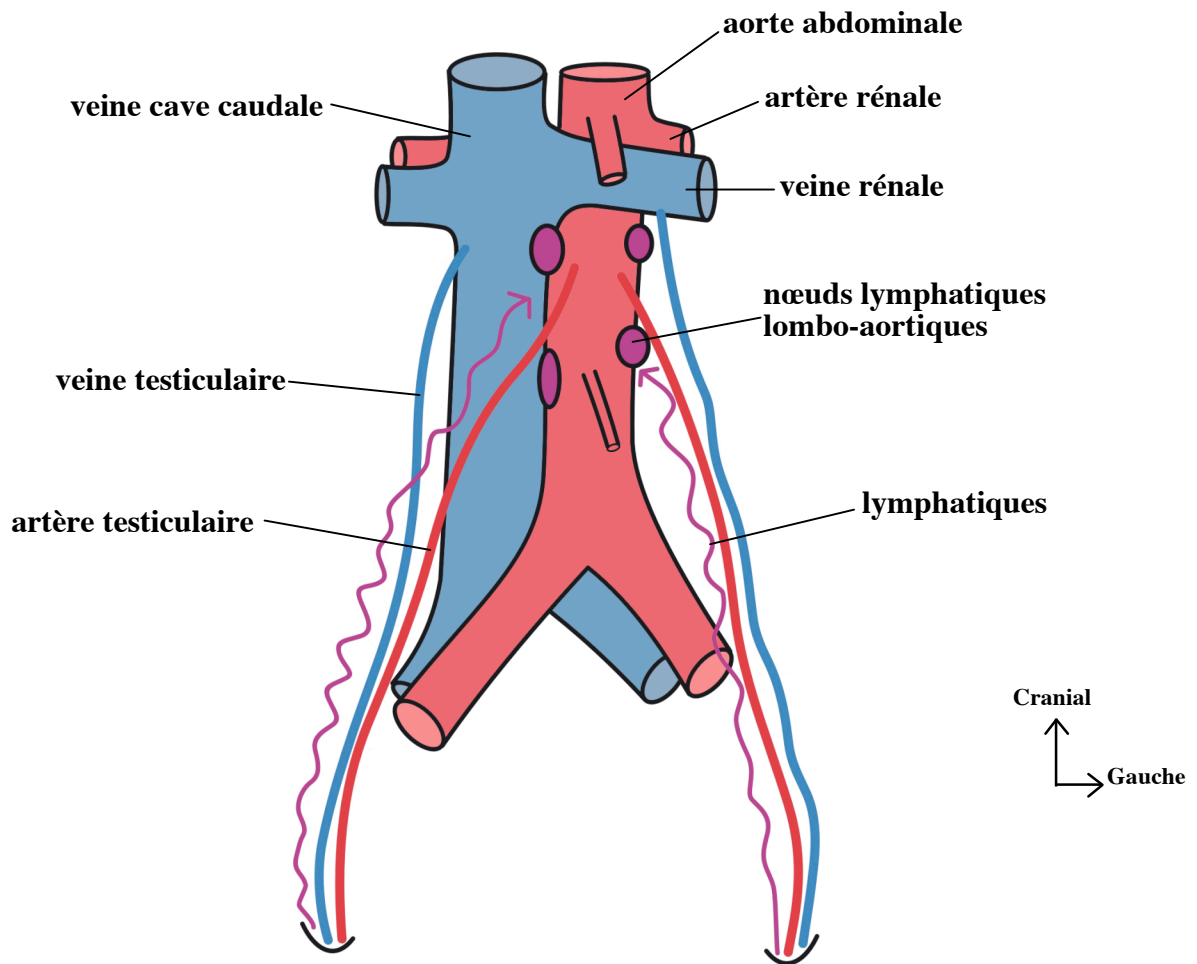
### La migration testiculaire



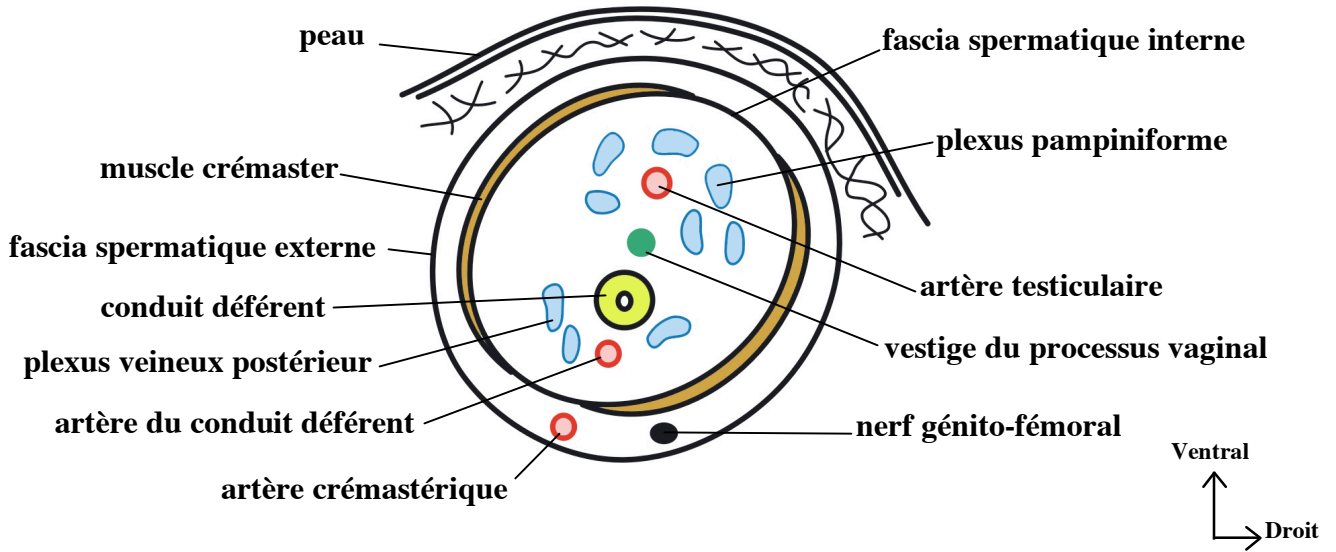
**Testicule, épидидyme et portion initiale du déférent  
(vue médiale du côté droit)**



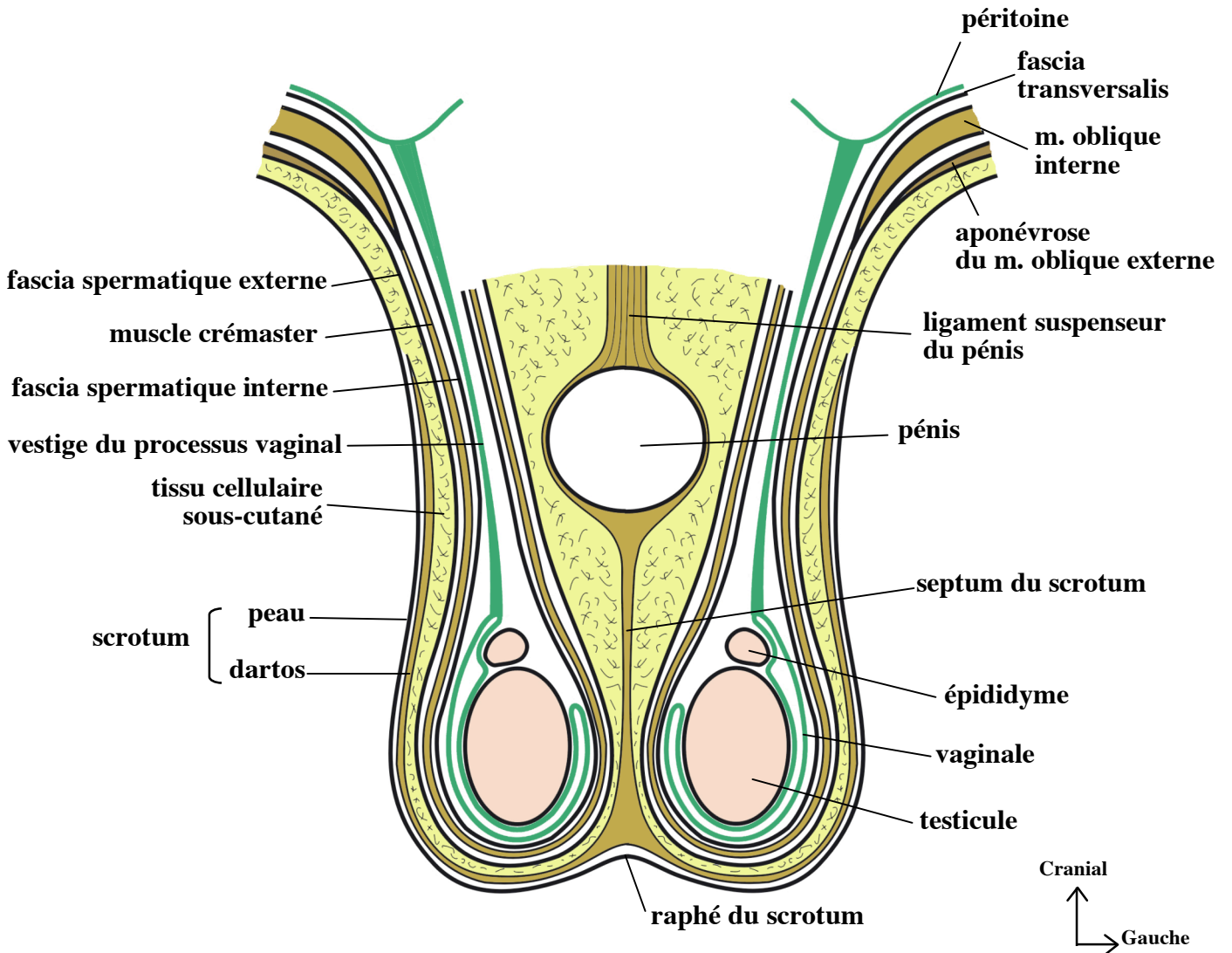
**structure du testicule et de l'épididyme**



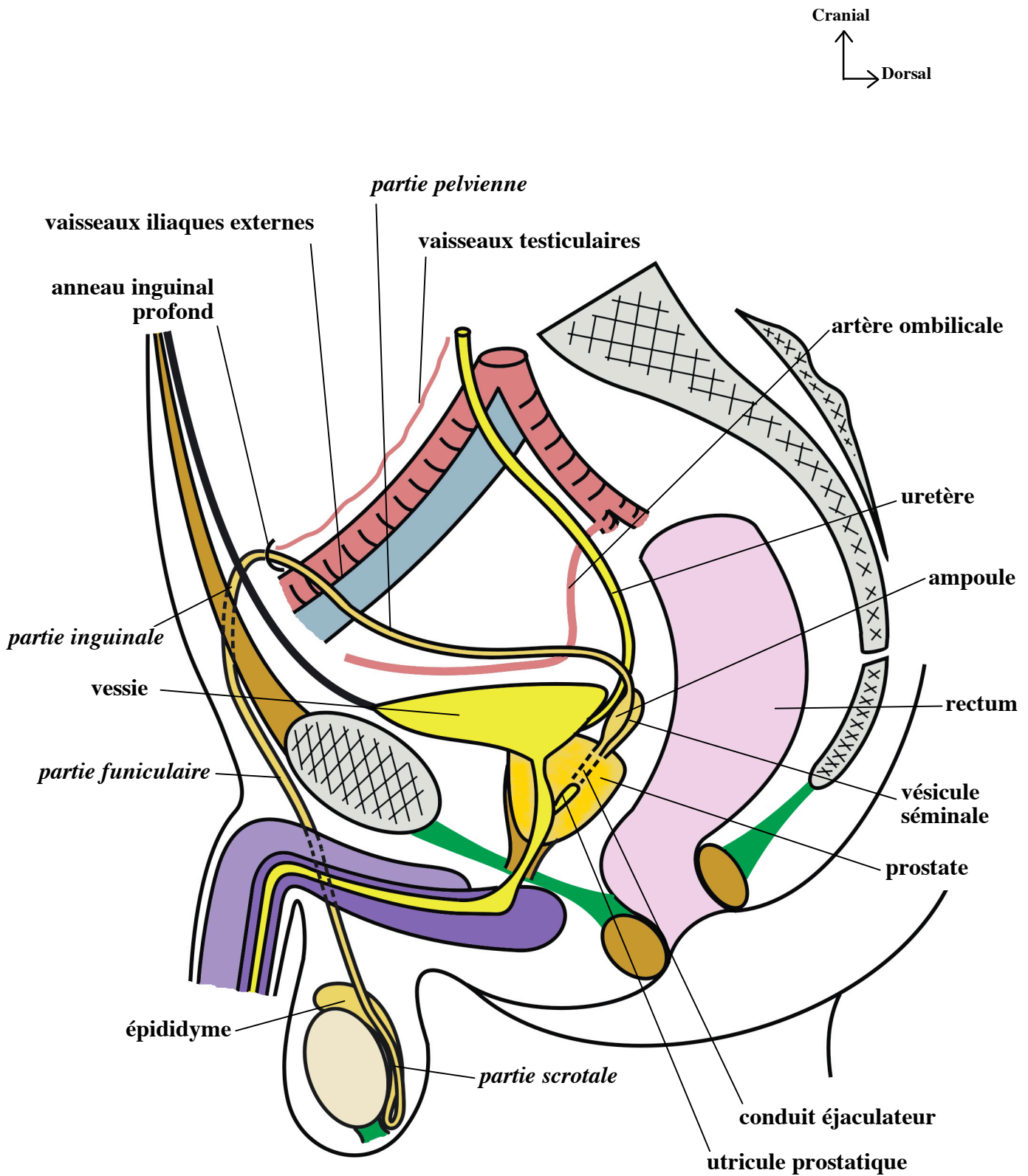
**Vascularisation du testicule, de l'épididyme et du conduit déférent**



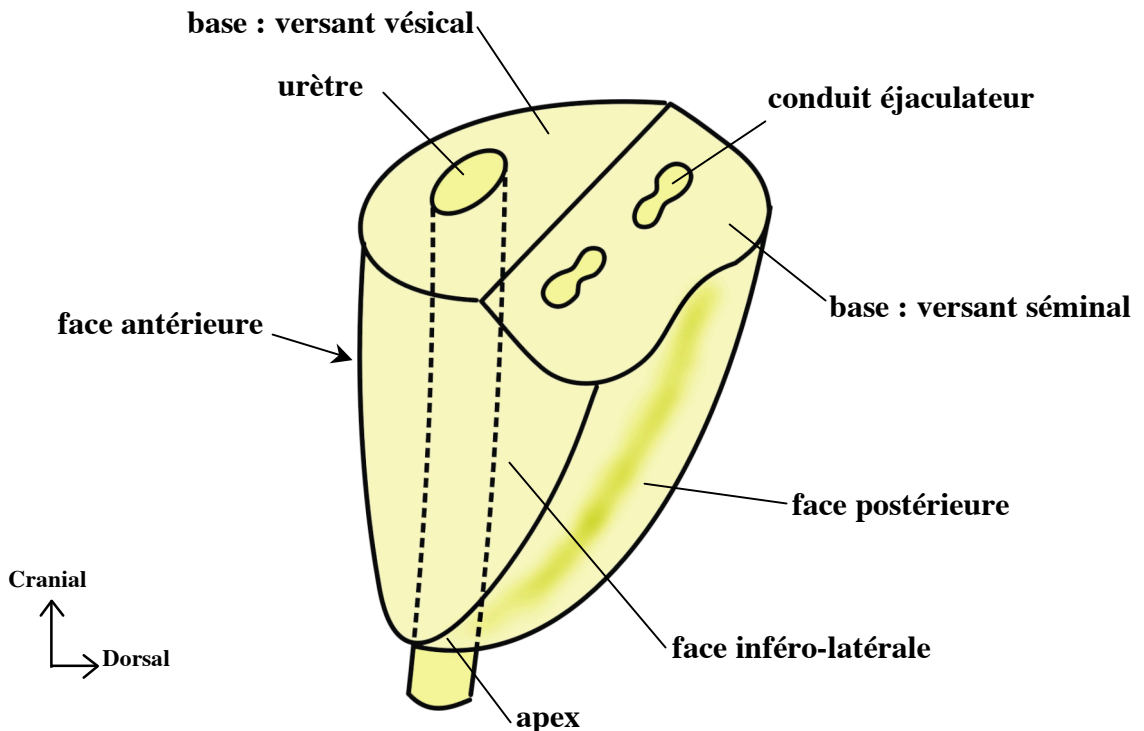
**Le cordon spermatique  
(coupe horizontale)**



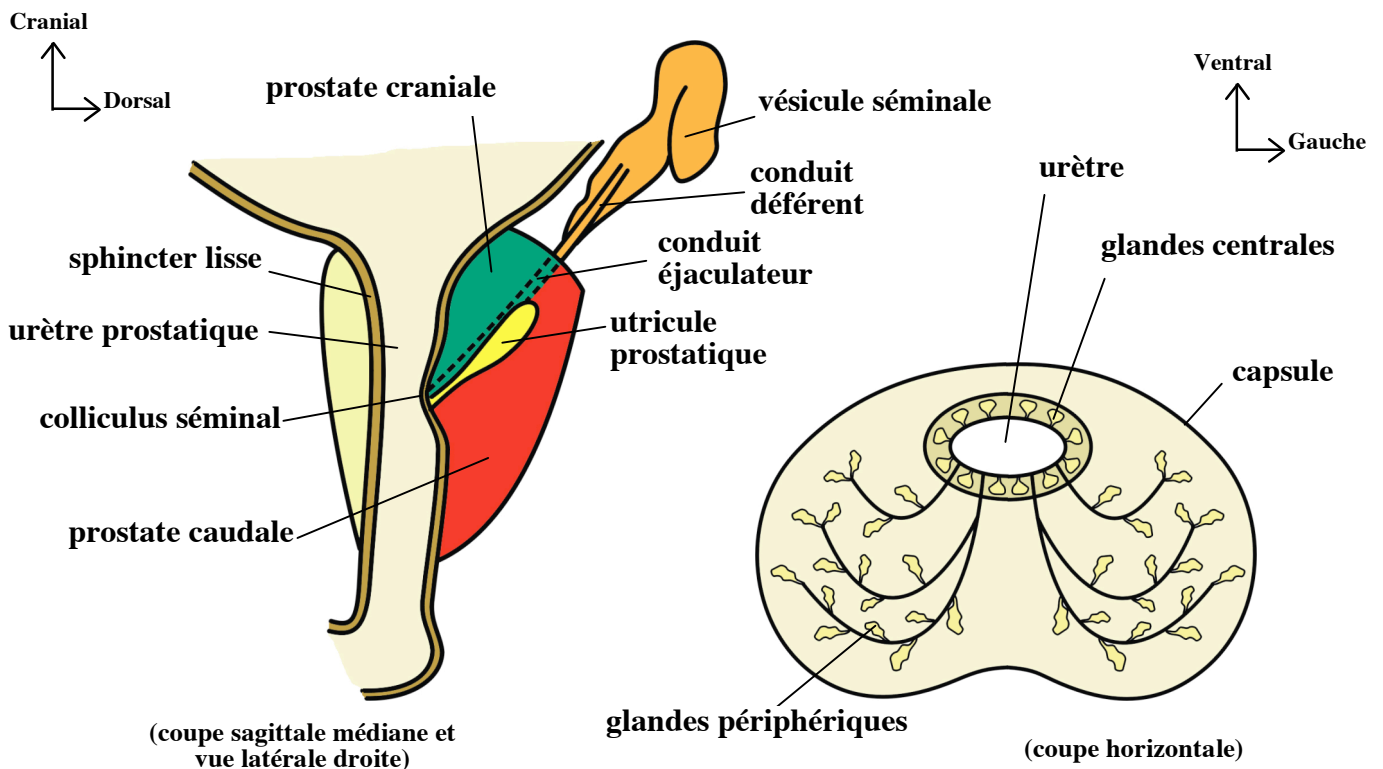
**Les enveloppes du testicule et du cordon  
(coupe frontale)**



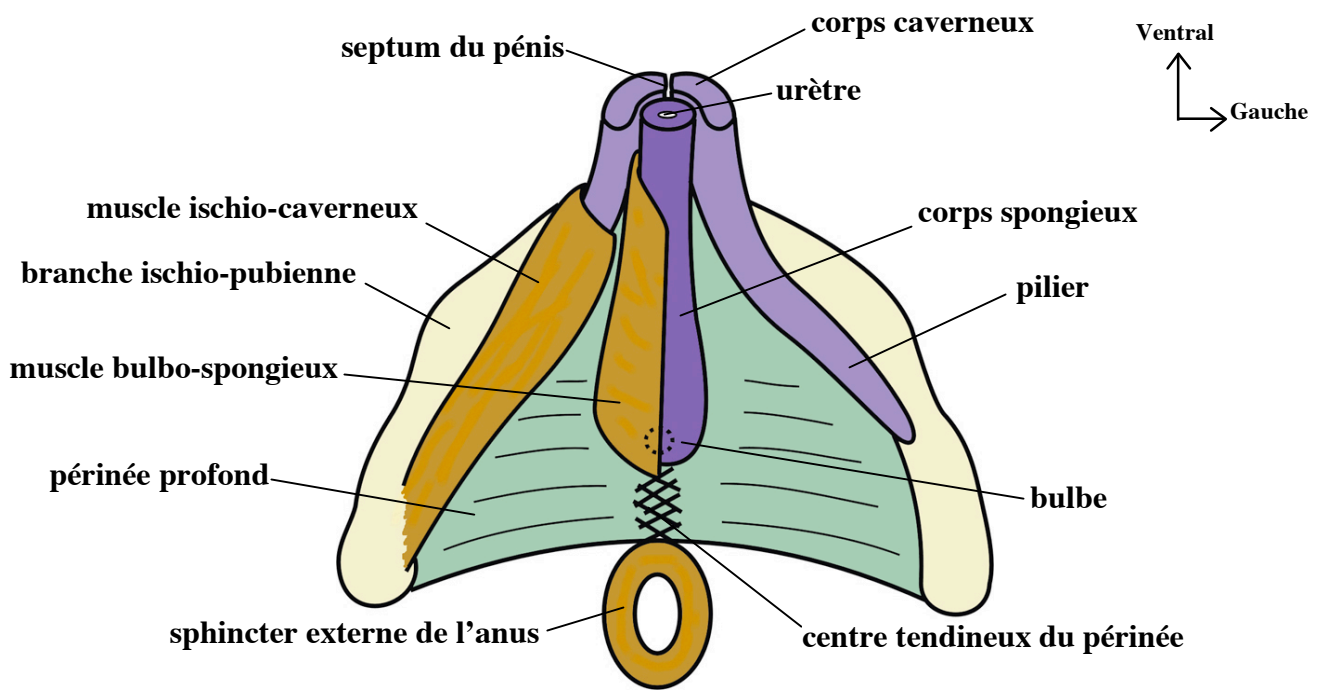
**Trajet et rapports du conduit déférent.  
(coupe sagittale médiane et vue de la partie droite)**



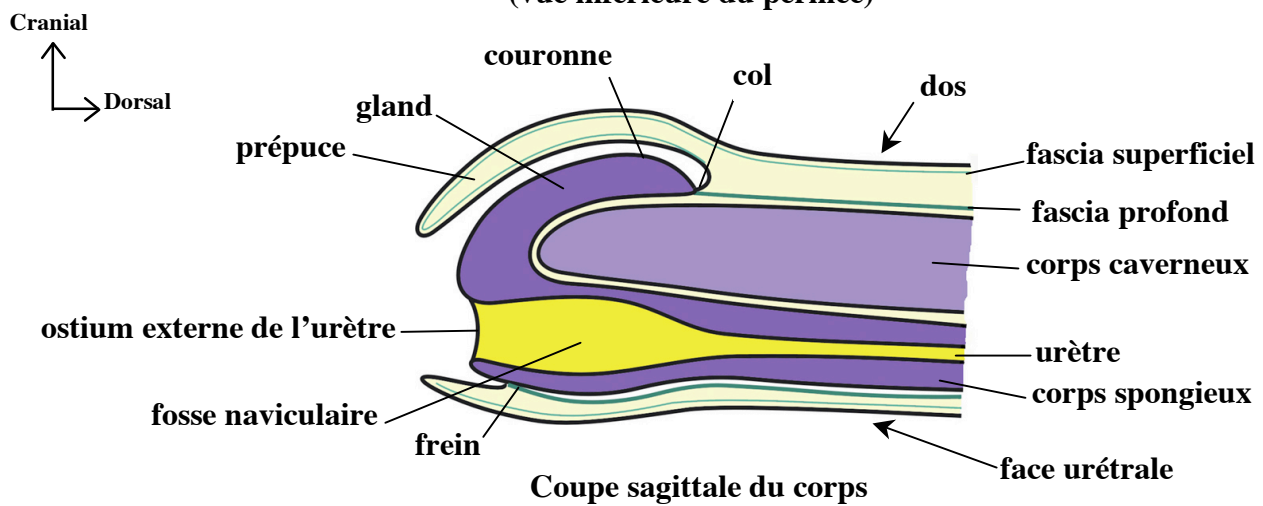
**Configuration externe de la prostate  
(vue dorso-latérale gauche)**



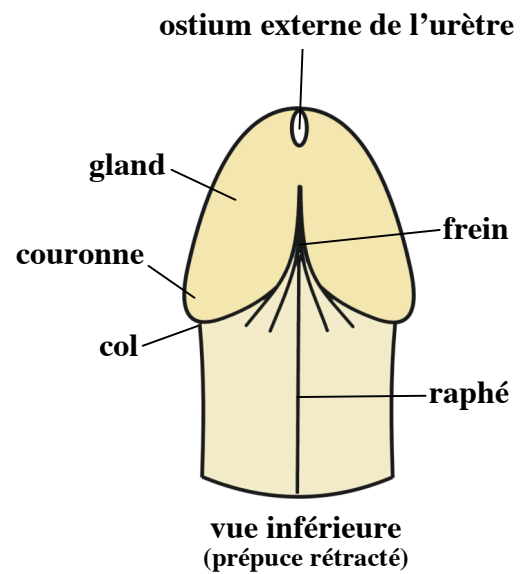
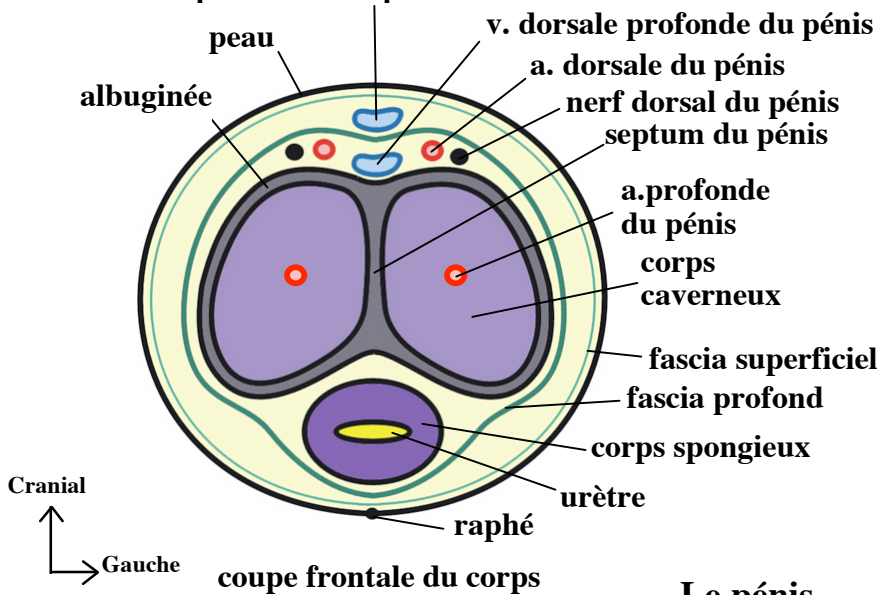
**Rapports intrinsèques et structure de la prostate**



**Racine du pénis  
(vue inférieure du périnée)**



**v. dorsale superficielle du pénis**



**Le pénis**